

SKS SWAMINARAYAN TEMPLE

EAST LONDON

SAHAJANAND SCHOOL

સહજાનંદ નિશાળ

INSTALLING GUJARATI LEARNING PROGRAM

September 22, 2025 v1.05

Table of Contents

General Information.....	3
Pre-requisites	3
Further Help required?	3
1.- Downloading the Program	4
2.- Preparing to Install the Program	5
3 – Installing on Windows 10 Only.....	6
3.1 – Executing the Install program	6
4 – Installing on Windows 11 Only.....	11
4.1 – Executing the Install program	11
5 - Running the Program	17
5.1 – Starting the program	17
5.2 – Registering a New User	17
5.3 – Logging into the Program	18

General Information

Pre-requisites

- Desktop PC or a Laptop
- Microsoft Windows Operating System
- Sound is working
- Headset is recommended

Further Help required?

If you need assistance installing or running the program, please [mailto:
sahajanand@eltemple.uk](mailto:sahajanand@eltemple.uk).

Describe the problem, and leave us your contact number. Someone from the school will contact you.

1.- Downloading the Program

Go to the Mandir website <http://www.eltemple.uk>

Go to the School Section

Click on Gujarati Downloads, then click on download in the Software box. Clicking on this will start to download a file called "Gujappsetup.ZIP" to your computer. It will be saved to your downloads folder.

2.- Preparing to Install the Program

If you have Windows 10, Go to Section 3.

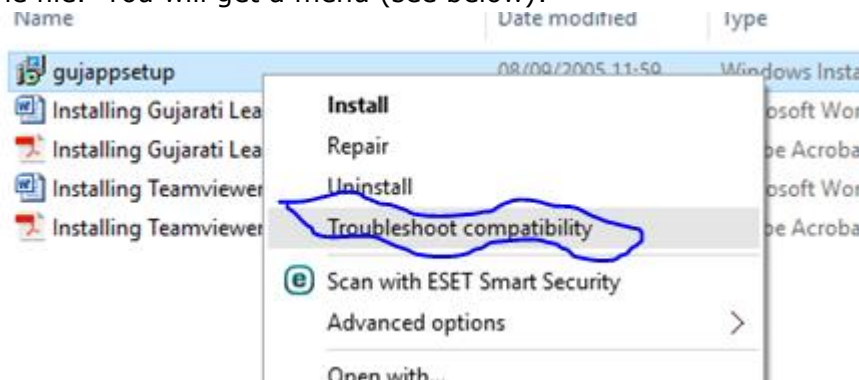
If you have Windows 11, Go to Section 4.

3 – Installing on Windows 10 Only

Follow the instructions below only if you are on Windows 10.

3.1 – Executing the Install program

Locate the file that you downloaded from the School web site, and RIGHT CLICK” on the file. You will get a menu (see below):



Click on “Troubleshoot compatibility”

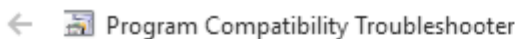
The system will detect compatibility issues. (see below)



Detecting issues



Once the system has finished, click on “Test the Program”



Test compatibility settings for the program

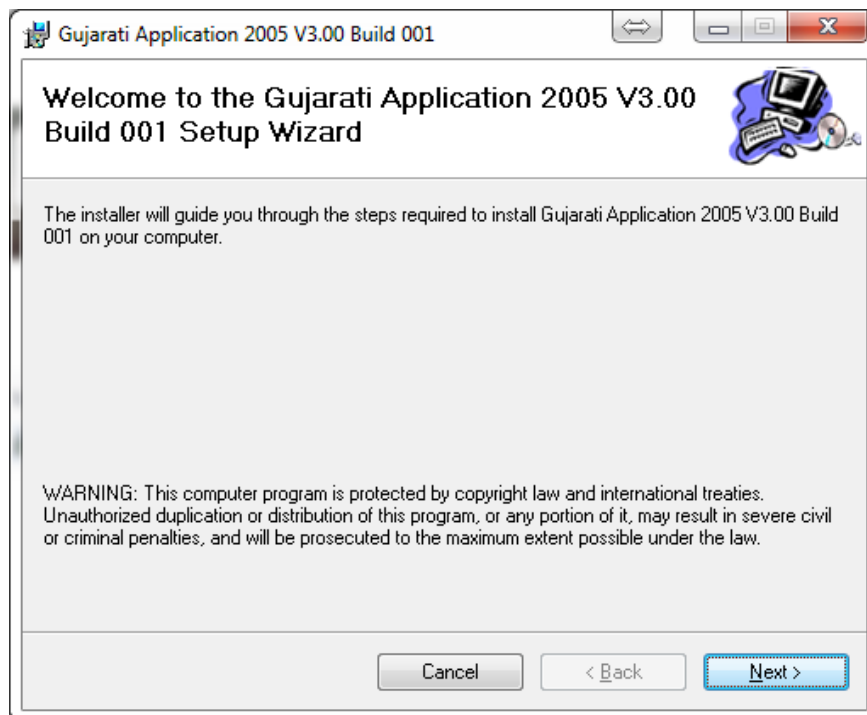
Settings applied:
Windows compatibility mode: Skip Version Check

You need to test the program to make sure these new settings fixed the problem before you can click Next to continue.

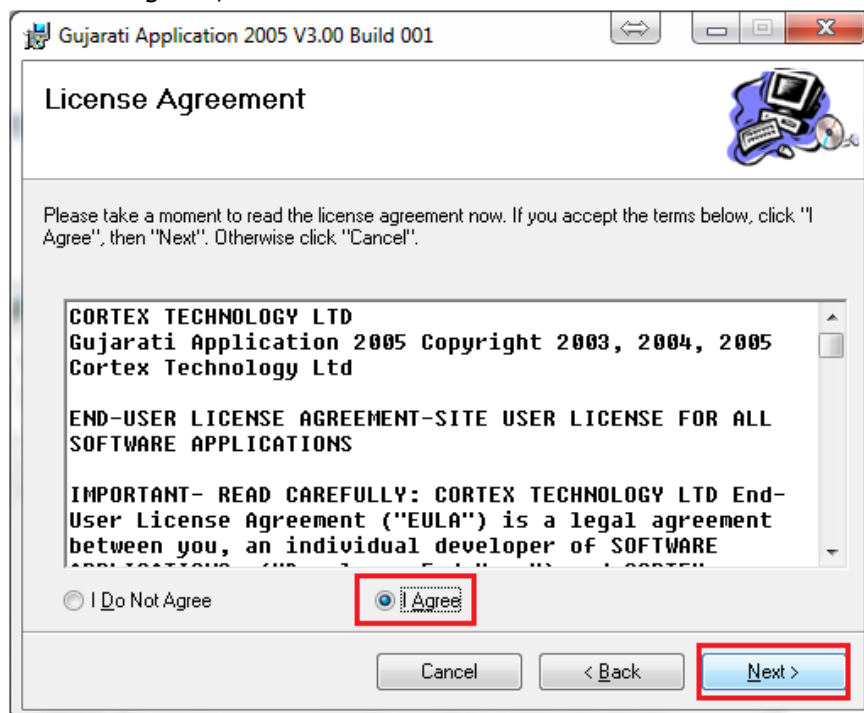
Test the program...

The program will now start to install.

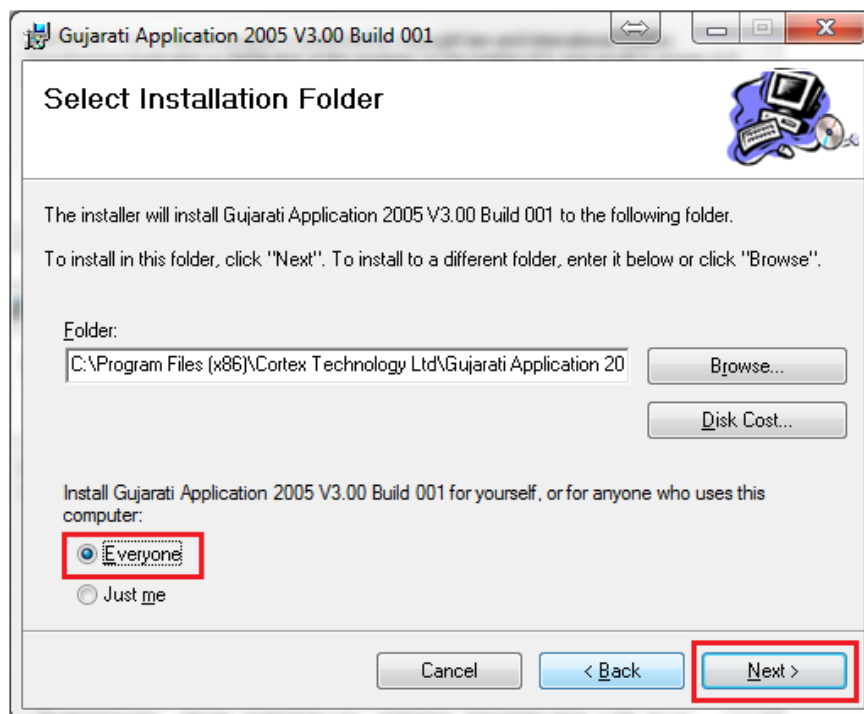
Click Next



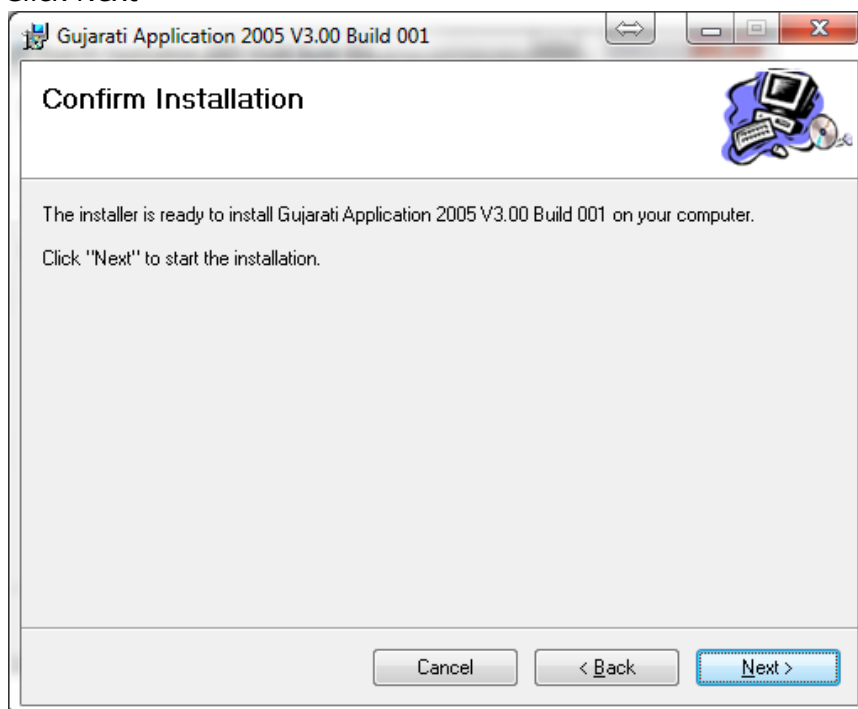
Select "I Agree", and click Next.



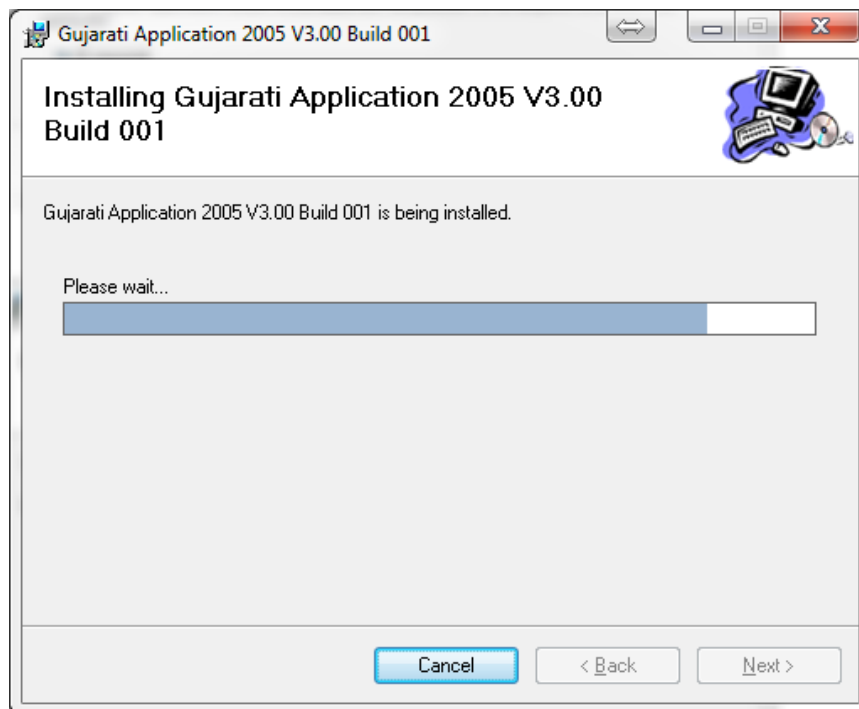
Select "Everyone", and click Next.



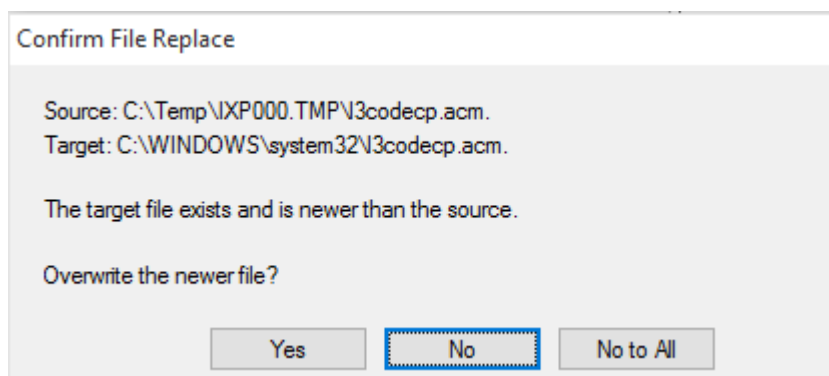
Click Next



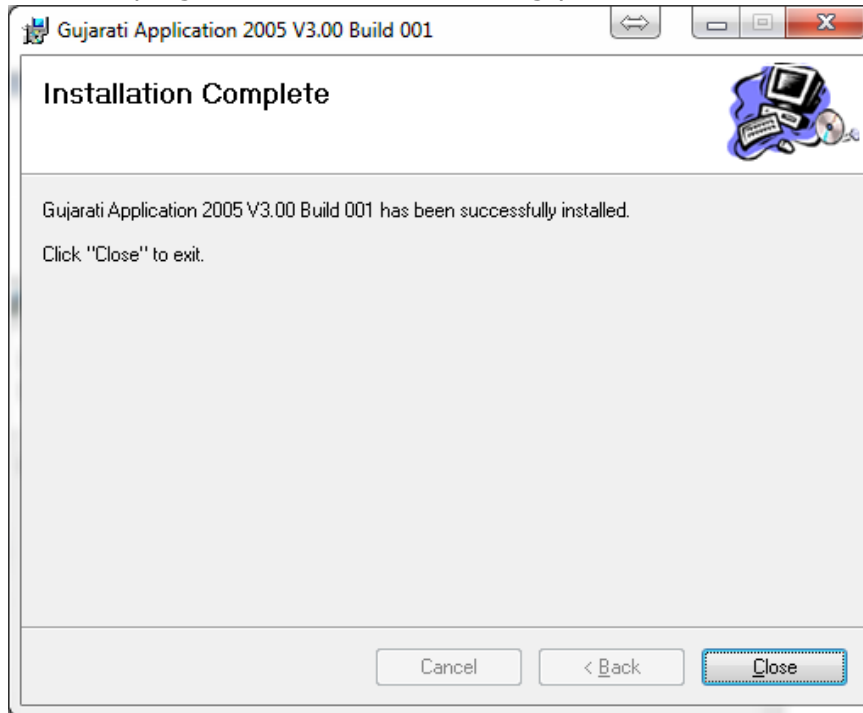
Wait until the program finished the installation.



If you get the below window, then click on “no”



Once the program has finished installing you will see the following display.



Click Close.

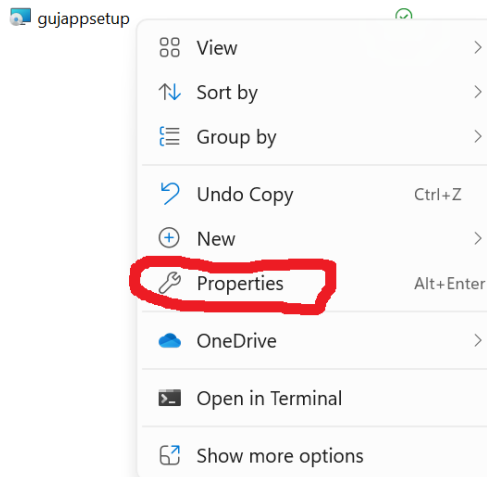
Program has installed skip to Section 5 – Running the Program

4 – Installing on Windows 11 Only

Follow the instructions below only if you are on Windows 11.

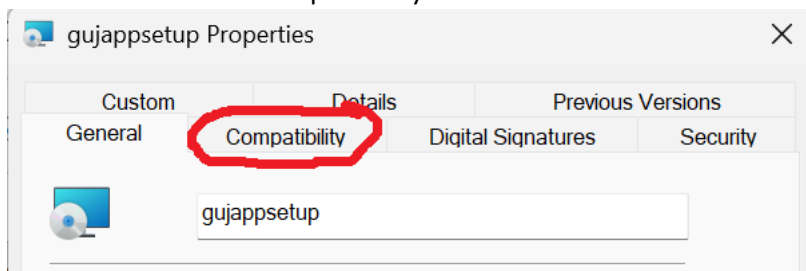
4.1 – Executing the Install program

Locate the file that you downloaded from the School web site, and RIGHT CLICK” on the file. You will get a menu (see below):

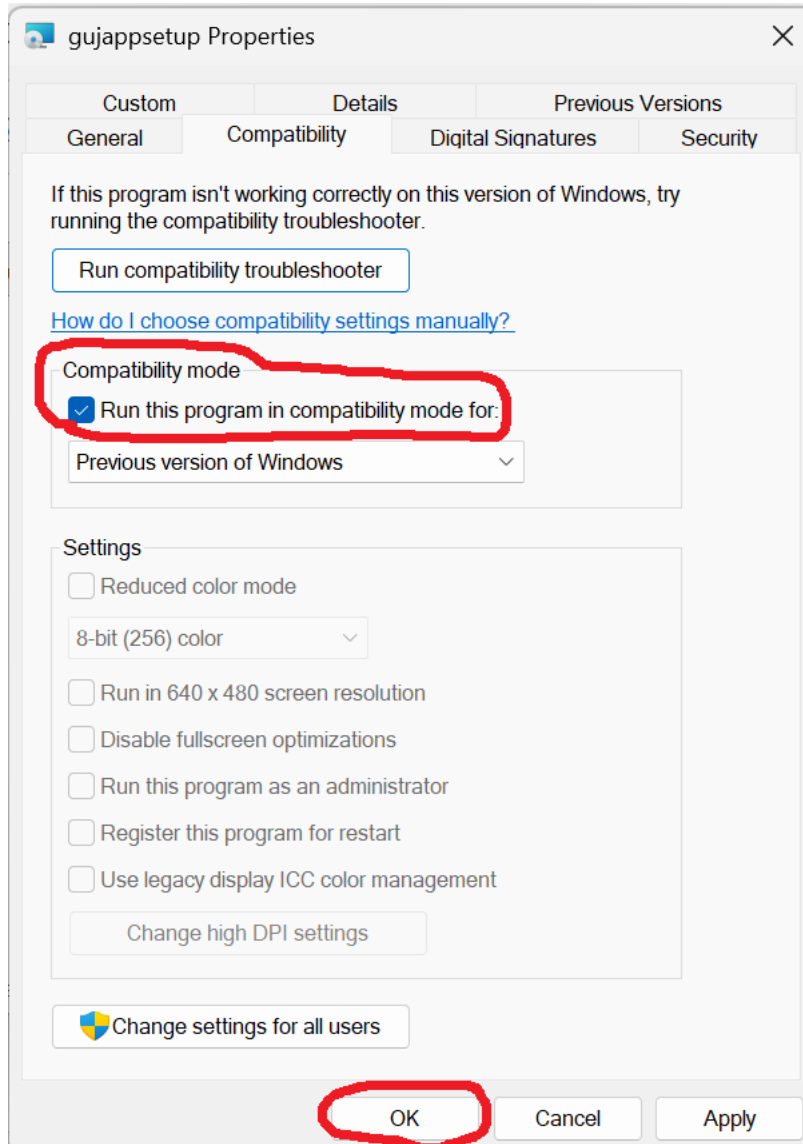


Click on “Properties”

Now click on the “Compatibility” tab



Now check the tick box "Run this program in compatibility mode for:

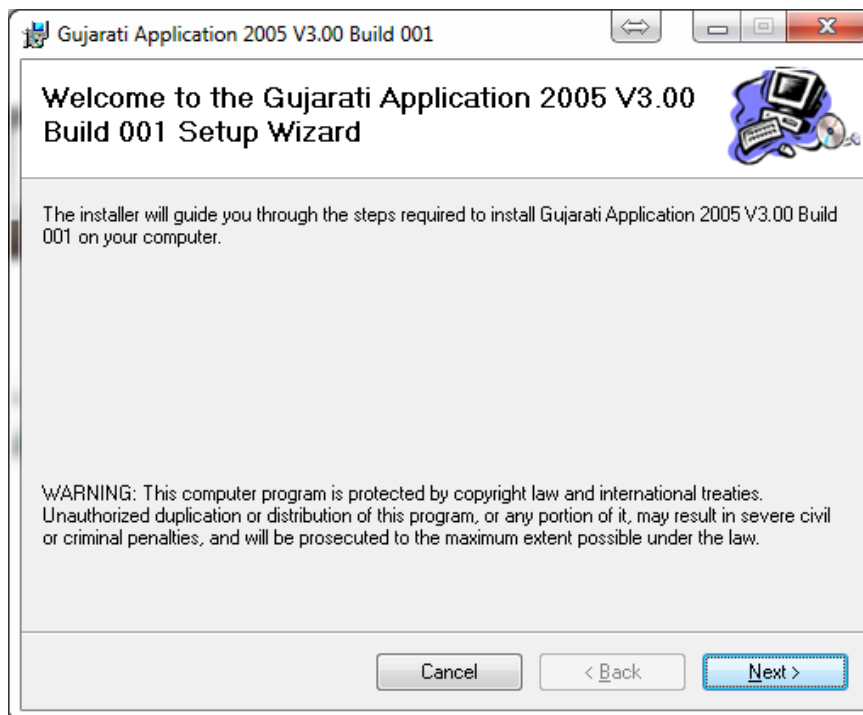


And click on OK.

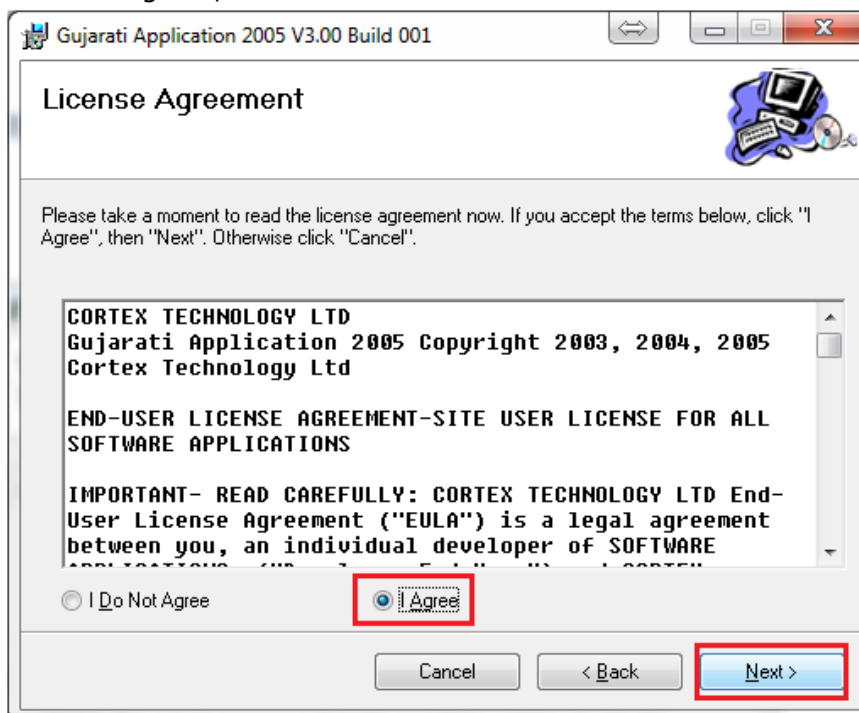
Now run the installer by double clicking on the **gujappsetup** file.

The program will now start to install.

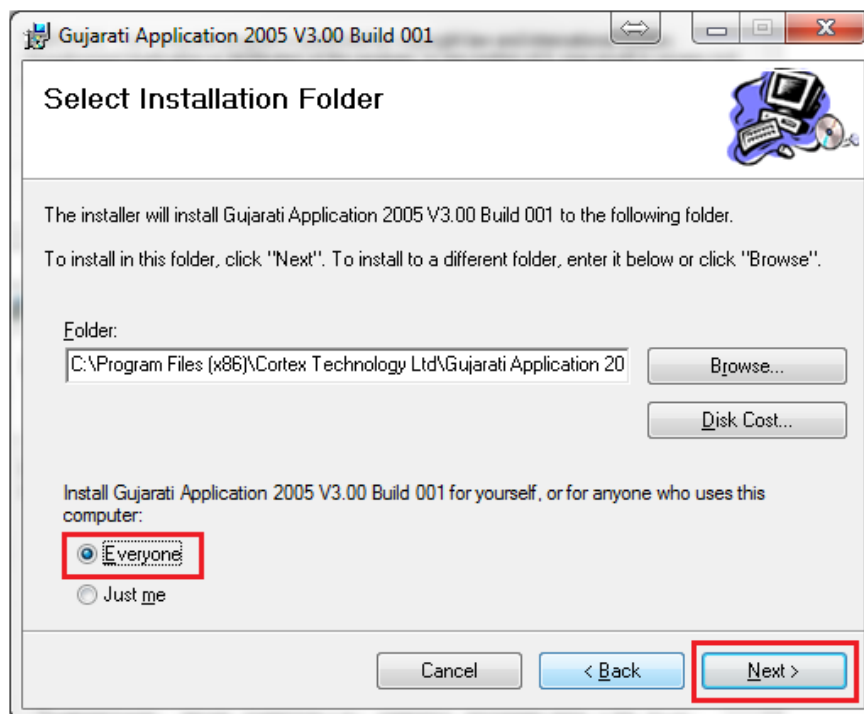
Click Next



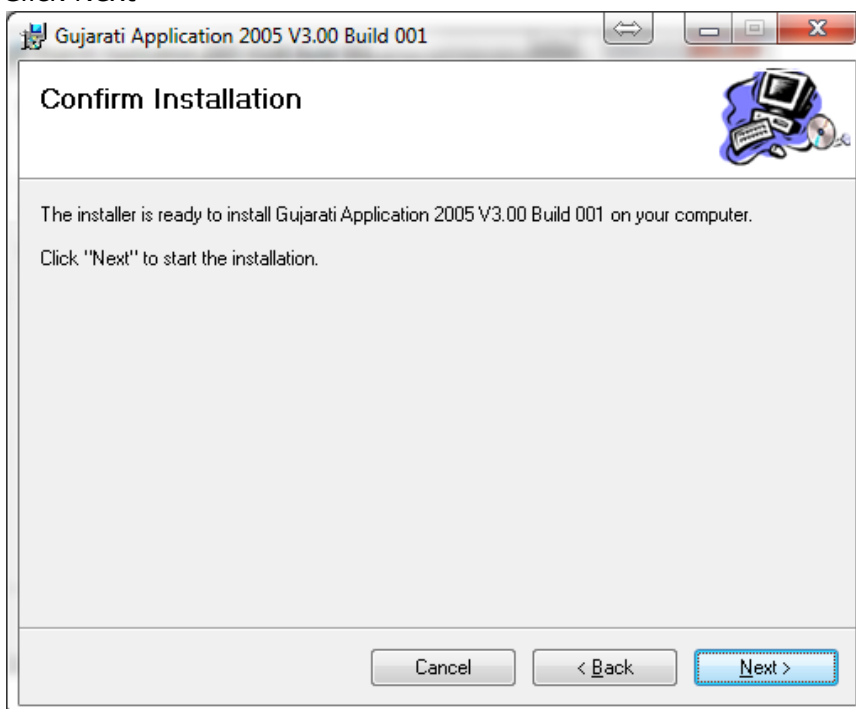
Select "I Agree", and click Next.



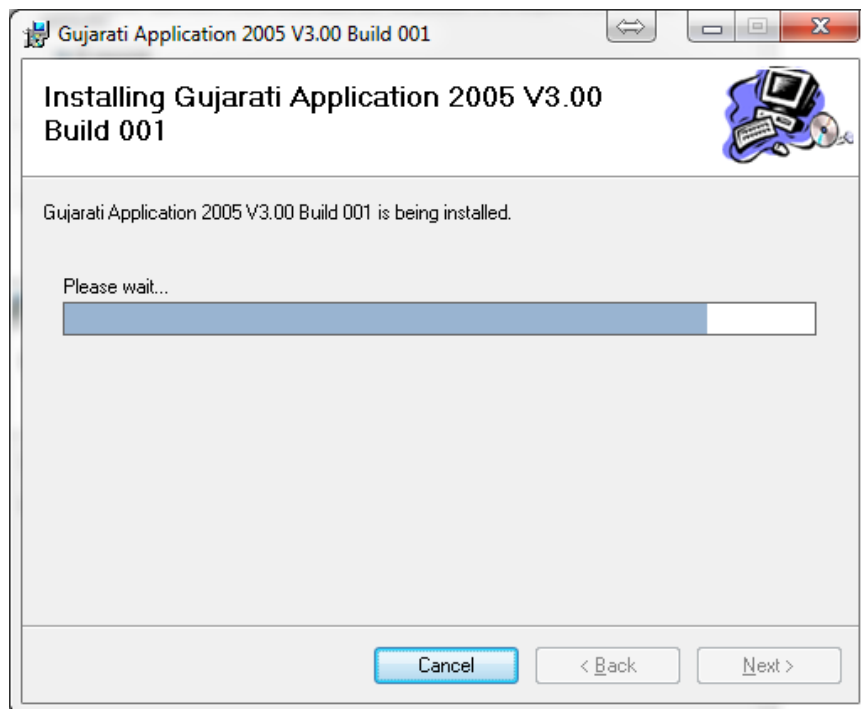
Select "Everyone", and click Next.



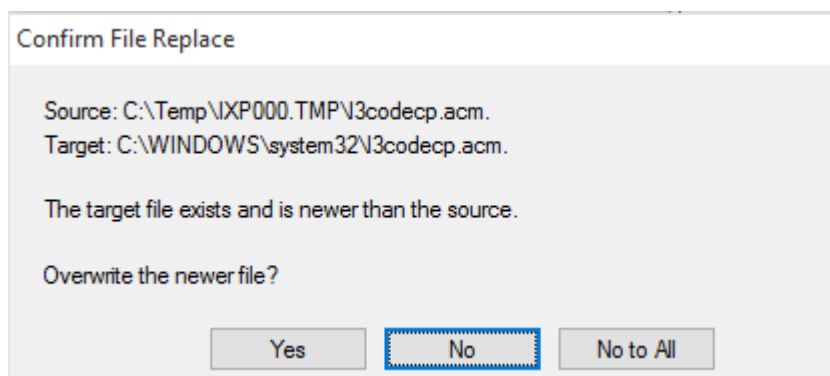
Click Next



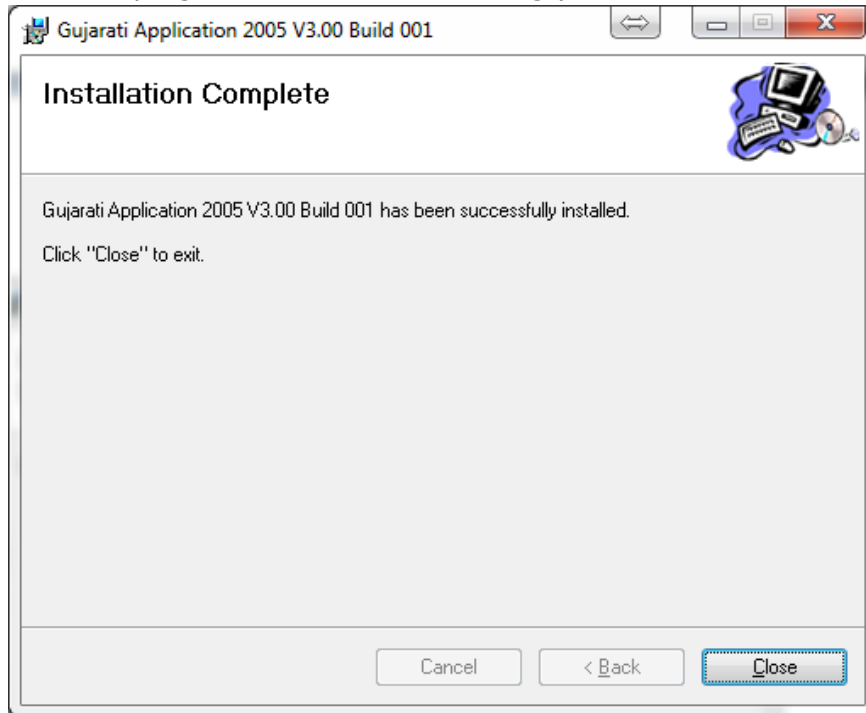
Wait until the program finished the installation.



If you get the below window, then click on “no”



Once the program has finished installing you will see the following display.



Click Close.

Program has installed skip to Section 5 – Running the Program

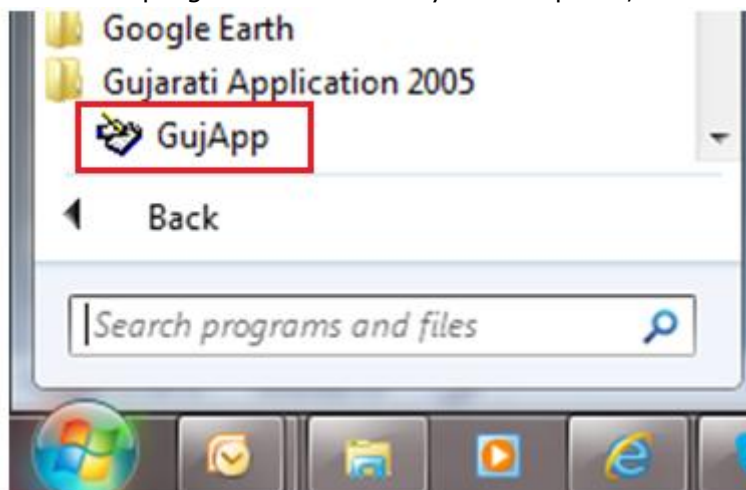
5 - Running the Program

5.1 – Starting the program

Make sure Sound is working and volume is set to a value comfortable to you.

In a noisy environment a Headset is recommended.

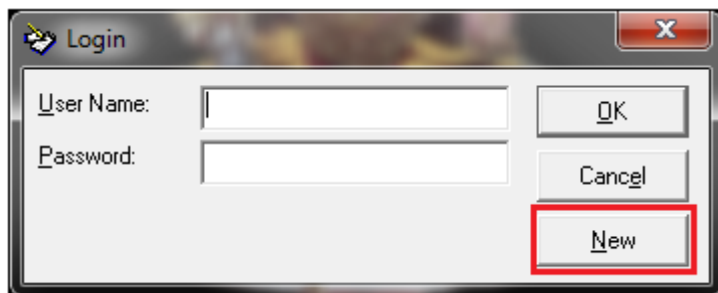
Locate the program installed on your computer, and click on "GujApp".



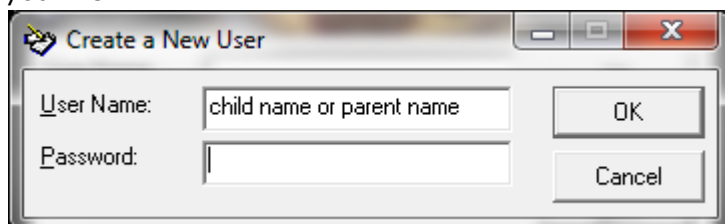
5.2 – Registering a New User

When running the program for the first time or running for a "new" user, click New

If you have already registered the user, just type in the "User Name" and the Password and click "OK".



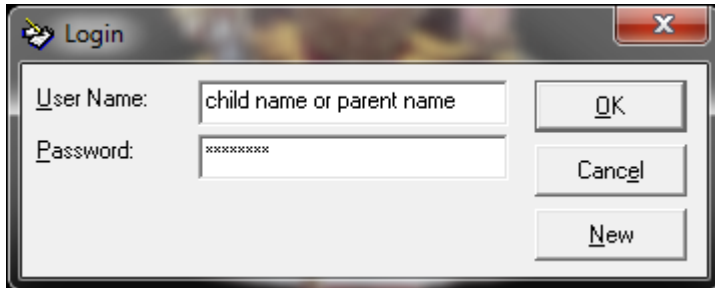
When creating a new user, enter a name of the new user in the User Name field, and enter the password for this user, then click "OK". You can leave the password blank if you wish.



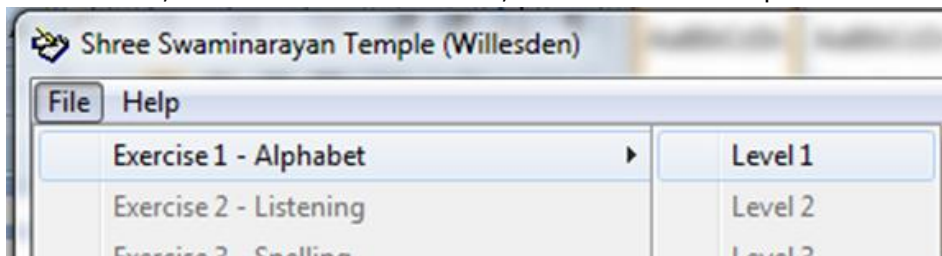
Note: Do not forget the Username and Password, else you will need to re-register the person.

5.3 – Logging into the Program

Enter the username and password, and click OK.



Click on File, Select the Last Exercise, and last level completed



Note, as you complete levels, other levels will be unlocked.

We recommend that even after all exercises are completed, you start all over again. The more you use it, the more you will learn Gujarati.

If you need assistance installing or running the program, please <mailto:sahajanand@eltemple.uk>.

Describe the problem, and leave us your contact number. Someone from the school will contact you.